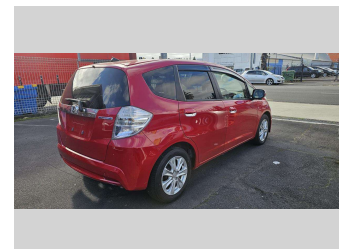
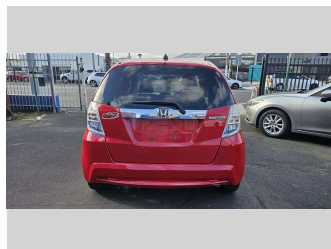
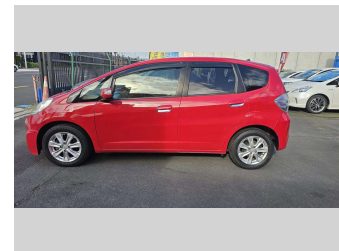
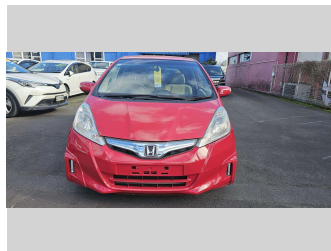
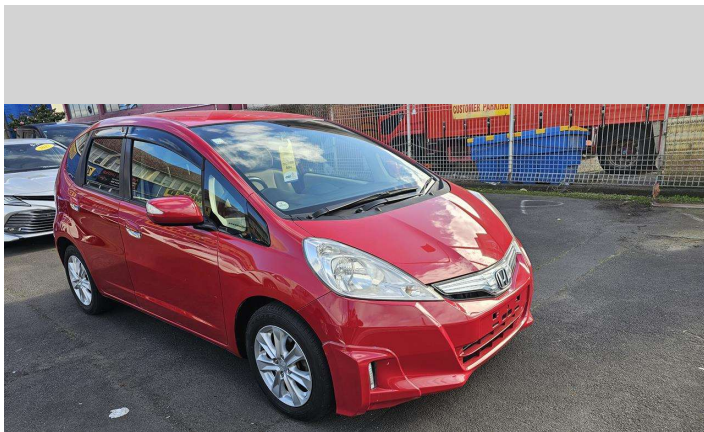



# 2012 Honda Fit Hybrid




**Purchase Price** **\$10,990**  
Includes GST, Registration & Licensing

Finance may be available on this vehicle. Ask one of our friendly staff for more information.



Gain peace of mind with Mechanical Breakdown Insurance. **Ask us how.**



**Top features**  
None Listed

Body Style  
**Hatchback**

Odometer  
**70,949 km**

Engine  
**1339 cc, Hybrid**


Fuel Type  
**Petrol**

Transmission  
**AUTO (PADDLE SHIFT)**

Wheels  
-

VIN  
**7AT08G2YX23131616**

Interior  
-

Safety  
  
Based on 2023 UCSR rating for 08-14 models

Reg No.  
-

Ext Colour  
**Red**

History  
-

Seats  
**5 seats**

CO2 Emissions  
**★★★★☆**  
**113 grams/km**

Energy Economy  
**★★★★☆☆**  
**Annual fuel cost of \$1,840**  
**4.7L per 100km**

Cost per year is an estimate based on petrol price of \$2.80 per litre and an average distance of 14000 km. Emissions and Energy Economy figures standardised to 3P WLTP.

**Stock ID: 710823**



New Age Cars | Phone 09 2761000 | Email info@newagecars.co.nz  
209 Great South Road, Opposite to Otahuhu Police Station, Otahuhu, Auckland  
1062, New Zealand  
www.newagecars.co.nz

