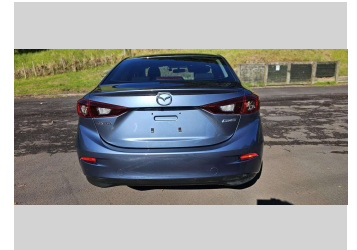
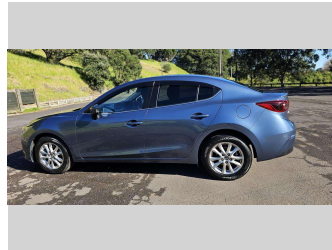
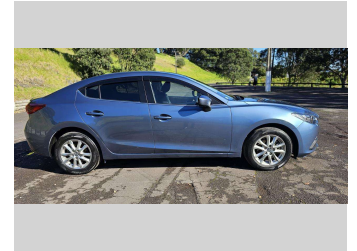
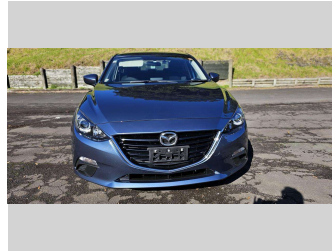


2014 Mazda Axela Hybrid



Purchase Price

\$18,990

Includes GST, Registration & Licensing

Finance may be available on this vehicle. Ask one of our friendly staff for more information.



Gain peace of mind with Mechanical Breakdown Insurance. **Ask us how.**



Top features

- » 16 Valve
- » 4 cylinder
- » Alloy wheels
- » AUX/ USB Port
- » Central Locking
- » Child seat anchor poin...
- » Climate Control
- » Cruise Control
- » Digital Display
- » Electric Mirrors
- » Electric retractable M...
- » Electric Windows
- » Fog Lights
- » Immobiliser
- » Indicator on side mirr...
- » Informative Display
- » ISOFIX Seats
- » i-Stop

Body Style

Sedan

Odometer

83,439 km

Engine

1997 cc, Hybrid Petrol

Fuel Type

Hybrid

Transmission

Auto, Front Wheel

Wheels

16", Factory Alloys

VIN

7AT0C13JX23103547

Interior

Black, BLACK

Safety



Based on 2023 UCSR rating for 13-19 models

Reg No.

QJY90

Ext Colour

Blue

History

Ex-Overseas

Seats

5 seats, Fabric

CO2 Emissions

★★★★☆

97 grams/km

Energy Economy

★★★★☆

Annual fuel cost of \$1,610

4.1L per 100km

Cost per year is an estimate based on petrol price of \$2.80 per litre and an average distance of 14000 km. Emissions and Energy Economy figures standardised to 3P WLTP.

Stock ID: 1405023



New Age Cars | Phone 09 2761000 | Email info@newagecars.co.nz
209 Great South Road, Opposite to Otahuhu Police Station, Otahuhu, Auckland
1062, New Zealand
www.newagecars.co.nz

