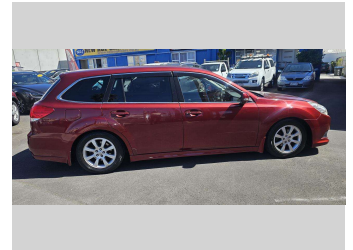
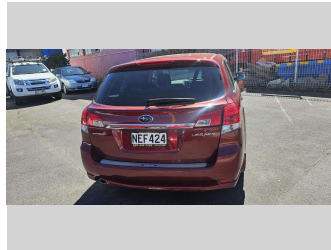
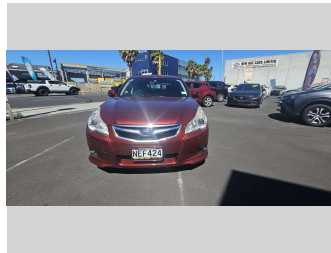


2009 Subaru Legacy B-Sport




Purchase Price **\$10,990**

Includes GST, Registration & Licensing Note: A Clean Car fee or rebate may apply to this vehicle

FinanceNoBlurb



Gain peace of mind with Mechanical Breakdown Insurance. **Ask us how.**



Top features

- » 20 Valve
- » 4 cylinder
- » Alloy wheels
- » AUX
- » Cruise Control
- » Electric Mirrors
- » Electric retractable M...
- » Electric Windows
- » Immobiliser
- » ISOFIX Seats
- » MP3 Player
- » Muti Function Streerin...
- » Power Steering
- » Push button Start
- » Rear Wiper
- » Remote Locking
- » Reversing Camera
- » Smart key

Body Style
5 door

Odometer
96,469 km

Engine
2450 cc, Internal Combustion

Fuel Type
Petrol


Transmission
Auto, AWD

Wheels
16", Factory Alloys

VIN
-

Interior
Black, BLACK

Safety



Based on 2023 UCSR rating for 09-14 models

Reg No.
NEF424

Ext Colour
Red

History
Ex-Overseas

Seats
5 seats, Fabric

CO2 Emissions
★ ★ ★ ★ ☆ ☆ ☆
199 grams/km

Energy Economy
★ ★ ☆ ☆ ☆ ☆ ☆
Annual fuel cost of \$3,250
8.3L per 100km

Cost per year is an estimate based on petrol price of \$2.80 per litre and an average distance of 14000 km. Emissions and Energy Economy figures standardised to 3P WLTP.



New Age Cars | Phone 09 2761000 | Email info@newagecars.co.nz
209 Great South Road, Opposite to Otahuhu Police Station, Otahuhu, Auckland
1062, New Zealand
www.newagecars.co.nz

