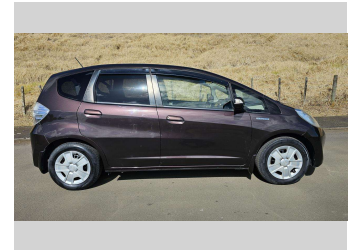
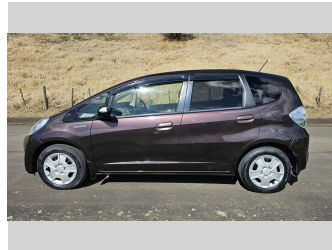
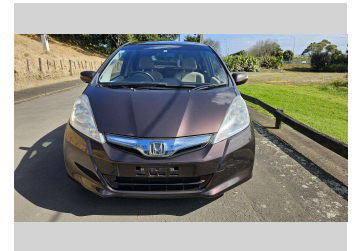
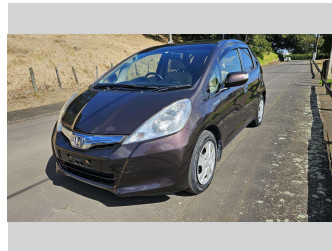


2012 Honda FIT Hybrid




Purchase Price **\$12,990**

Includes GST, Registration & Licensing Note: A Clean Car fee or rebate may apply to this vehicle

FinanceNoBlurb



Gain peace of mind with Mechanical Breakdown Insurance. **Ask us how.**



Top features

- » 16 Valve
- » 4 cylinder
- » AUX
- » Central Locking
- » Climate Control
- » Digital Display
- » Electric Mirrors
- » Electric Windows
- » Immobiliser
- » Indicator on side mirr...
- » Informative Display
- » ISOFIX Seats
- » Power Steering
- » Rear Wiper
- » Remote Locking

Body Style
Hatchback

Odometer
70,080 km

Engine
1339 cc, Hybrid Petrol

Fuel Type
Hybrid


Transmission
Auto, Front Wheel

Wheels
14", Wheel Caps

VIN
7AT08G2YX23203311

Interior
Beige, BLACK

Safety



Based on 2023 UCSR rating for 08-14 models

Reg No.
-

Ext Colour
Brown

History
Ex-Overseas

Seats
5 seats, Cloth

CO2 Emissions
★★★★☆
113 grams/km

Energy Economy
★★★★☆☆
Annual fuel cost of \$1,840
4.7L per 100km

Cost per year is an estimate based on petrol price of \$2.80 per litre and an average distance of 14000 km. Emissions and Energy Economy figures standardised to 3P WLTP.



New Age Cars | Phone 09 2761000 | Email info@newagecars.co.nz
209 Great South Road, Opposite to Otahuhu Police Station, Otahuhu, Auckland
1062, New Zealand
www.newagecars.co.nz

