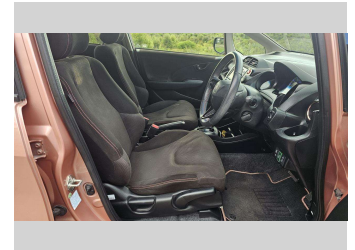
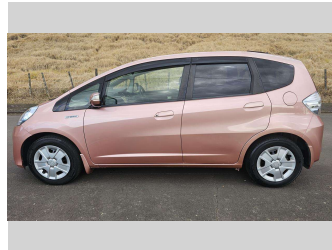
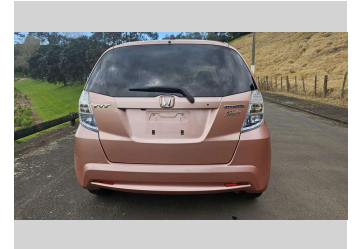
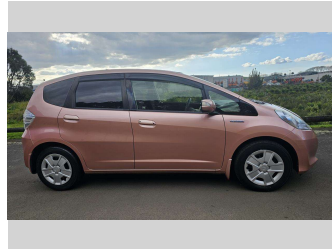
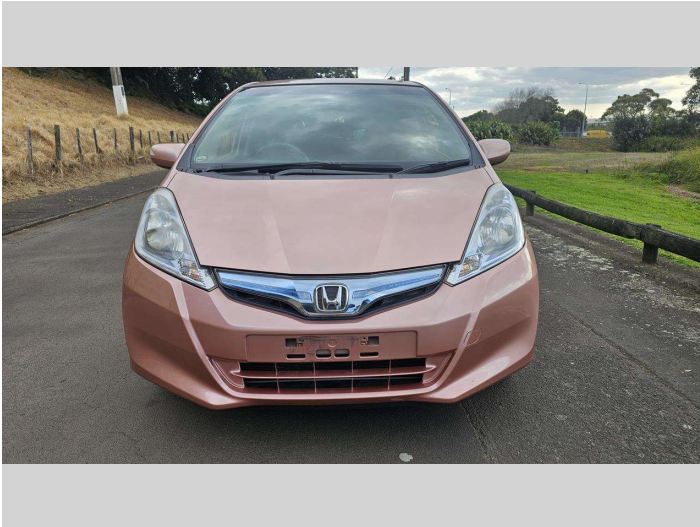


2012 Honda Fit Hybrid




Purchase Price **\$12,990**

Includes GST, Registration & Licensing Note: A Clean Car fee or rebate may apply to this vehicle

FinanceNoBlurb



Gain peace of mind with Mechanical Breakdown Insurance. **Ask us how.**



Top features

- » 16 Valve
- » ABS Braking w/ EBD
- » Central Locking
- » Child seat anchor poin...
- » Climate Control
- » Cruise Control
- » Cruise Control
- » Digital Display
- » Electric Mirrors
- » Electric retractable M...
- » Electric Windows
- » Immobiliser
- » Indicator on side mirr...
- » Informative Display
- » ISOFIX Seats
- » MP3 Player
- » Rear Wiper
- » Remote Locking

Body Style
5 door, Hatchback

Odometer
71,258 km

Engine
1339 cc, Hybrid Petrol

Fuel Type
Hybrid


Transmission
Auto, Front Wheel

Wheels
15", Wheel Caps

VIN
7AT08G2YX23216790

Interior
Brown, BLACK

Safety



Based on 2023 UCSR rating for 08-14 models

Reg No.
-

Ext Colour
PINK

History
Ex-Overseas

Seats
5 seats, Fabric

CO2 Emissions
★★★★☆

113 grams/km

Energy Economy
★★★★☆☆

Annual fuel cost of \$1,840
4.7L per 100km

Cost per year is an estimate based on petrol price of \$2.80 per litre and an average distance of 14000 km. Emissions and Energy Economy figures standardised to 3P WLTP.



New Age Cars | Phone 09 2761000 | Email info@newagecars.co.nz
209 Great South Road, Opposite to Otahuhu Police Station, Otahuhu, Auckland
1062, New Zealand
www.newagecars.co.nz

