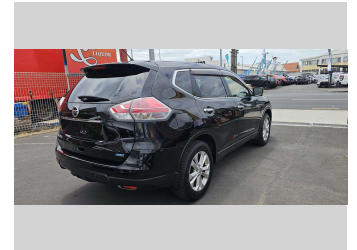
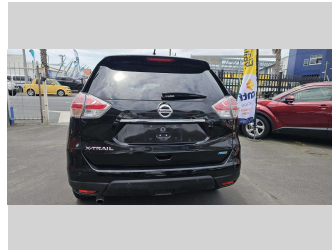
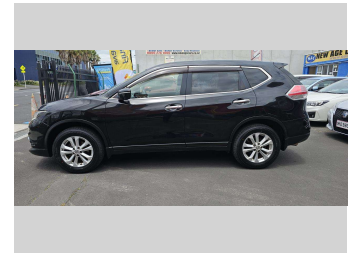
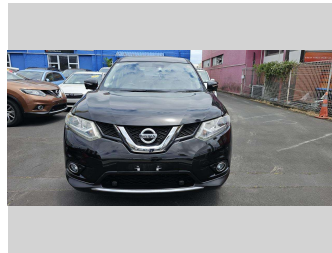
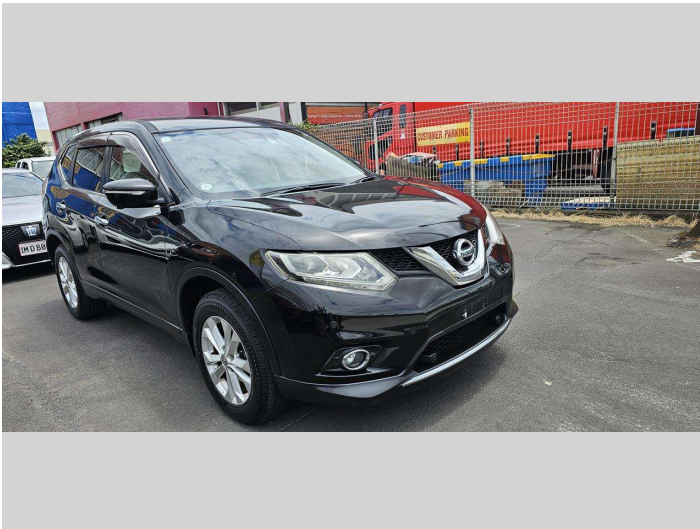


# 2014 Nissan X-trail 20X




**Purchase Price** **\$19,990**

Includes GST, Registration & Licensing Note: A Clean Car fee or rebate may apply to this vehicle

FinanceNoBlurb



Gain peace of mind with Mechanical Breakdown Insurance. **Ask us how.**



**Top features**

- » 20 Valve
- » 4 cylinder
- » Alloy wheels
- » Central Locking
- » Central Locking
- » Child seat anchor poin...
- » Cruise Control
- » Electric Mirrors
- » Electric retractable M...
- » Electric Windows
- » Heated Seats
- » Immobiliser
- » Indicator on side mirr...
- » Informative Display
- » ISOFIX Seats
- » i-Stop
- » MP3 Player
- » Muti Function Streerin...

Body Style  
**5 door, Wagon**

Odometer  
**69,782 km**

Engine  
**1997 cc, Internal Combustion**

Fuel Type  
**Petrol**

Transmission  
**Auto, Front Wheel**

Wheels  
**17", Factory Alloys**

VIN  
**7AT0DH6LX23002217**

Interior  
**Black, BLACK**

Safety



Based on 2023 UCSR rating for 14-21 models

Reg No.  
-

Ext Colour  
**Black**

History  
**Ex-Overseas**

Seats  
**5 seats, Leather**

CO2 Emissions  
**★★★★☆**  
**162 grams/km**

Energy Economy  
**★★★★☆☆**  
**Annual fuel cost of \$2,700**  
**6.9L per 100km**

Cost per year is an estimate based on petrol price of \$2.80 per litre and an average distance of 14000 km. Emissions and Energy Economy figures standardised to 3P WLTP.



New Age Cars | Phone 09 2761000 | Email info@newagecars.co.nz  
209 Great South Road, Opposite to Otahuhu Police Station, Otahuhu, Auckland  
1062, New Zealand  
www.newagecars.co.nz

