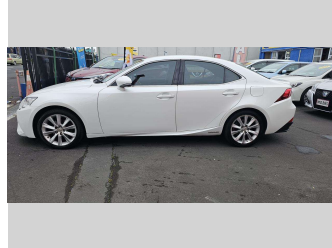
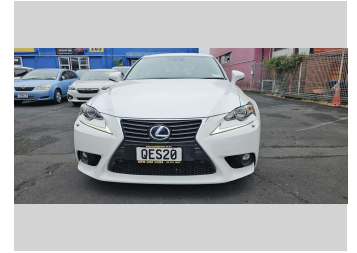


2014 Lexus IS300H




Purchase Price **\$24,990**

Includes GST, Registration & Licensing Note: A Clean Car fee or rebate may apply to this vehicle

FinanceNoBlurb



Gain peace of mind with Mechanical Breakdown Insurance. **Ask us how.**



Top features

- » 20 Valve
- » 4 cylinder
- » Alloy wheels
- » Cruise Control
- » Electric Mirrors
- » Electric retractable M...
- » Electric Windows
- » Fog Lights
- » Immobiliser
- » Indicator on side mirr...
- » Parking Sensors
- » Power Steering

Body Style
4 door, Sedan

Odometer
88,616 km

Engine
2494 cc, Hybrid Petrol

Fuel Type
Hybrid

Transmission
Auto, AWD

Wheels
17", Factory Alloys

VIN
JTHBH5D2805033565

Interior
Black, BLACK

Safety



Based on 2023 VSRR rating

Reg No.
QES20

Ext Colour
White

History
Ex-Overseas

Seats
5 seats, Leather

CO2 Emissions
★☆☆☆☆

Energy Economy
☆☆☆☆☆

Annual fuel cost not available

Energy Consumption unknown.
Emissions and Energy Economy figures standardised to 3P WLTP.



New Age Cars | Phone 09 2761000 | Email info@newagecars.co.nz
209 Great South Road, Opposite to Otahuhu Police Station, Otahuhu, Auckland
1062, New Zealand
www.newagecars.co.nz

